



For modular and superior interiors  
that suit your needs, budget and style.



Turn to Tandem 



## Modular Kitchens, Wardrobes and Shelves

Benefit from  
Tandem's experience  
and expertise.  
And save time,  
effort and money.

Our services are **modular  
and flexible**: so you can  
select only the units you  
want. You can chop and  
change, mix and match!  
The choice is yours; the  
responsibility ours.

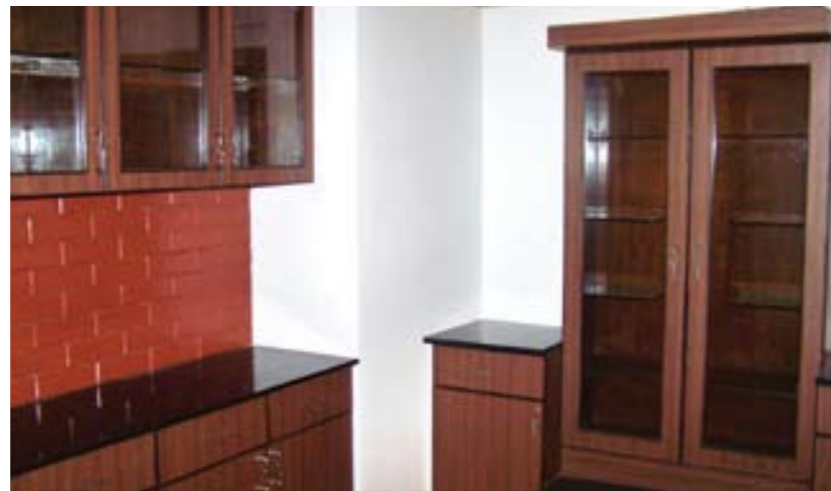
Whether you are fitting out a brand new  
apartment or an old and loved family home  
Tandem's Interiors Division has been created  
to step in and help you through this process.

We can help you in design and installation  
of modular kitchens; wardrobes, shelves and  
other storage units.

All our units offer:

- A range of elegant finishes—wood,  
veneer, laminate or MDF in varied colour  
options.
- Features like non-stain, wipe-clean  
surfaces; space-saving pull-outs,  
soft-closing mechanisms, and captive rails  
and hinges for smooth self-closing.
- High quality accessories and fittings.
- And the convenience of customisation—  
to fit your specific requirements,  
apartment size, décor and budget.





## Modular Kitchens

### Tandem's flexible menu of kitchens

- A range of modular kitchen options in styles ranging from traditional wall-and-base cabinet units to island designs.
- High-quality materials that conform to ISI specifications
- Top-of-the-line components from national and international brands.
- Well-trained professionals to ensure installation is neat, efficient and as per schedule.

**MATERIALS AND FINISH:** MDF, veneer, laminates and natural wood. Wood is chemically treated and protected

**COLOURS AND TREATMENTS:**  
(See chart on next page)

**DOOR STYLES:** Various options available.

**HARDWARE:** Concealed, self-closing, EBCO/Hettich or equivalent adjustable hinges. Wood, metal or epoxy-coated handles and knobs. Telescopic channels.

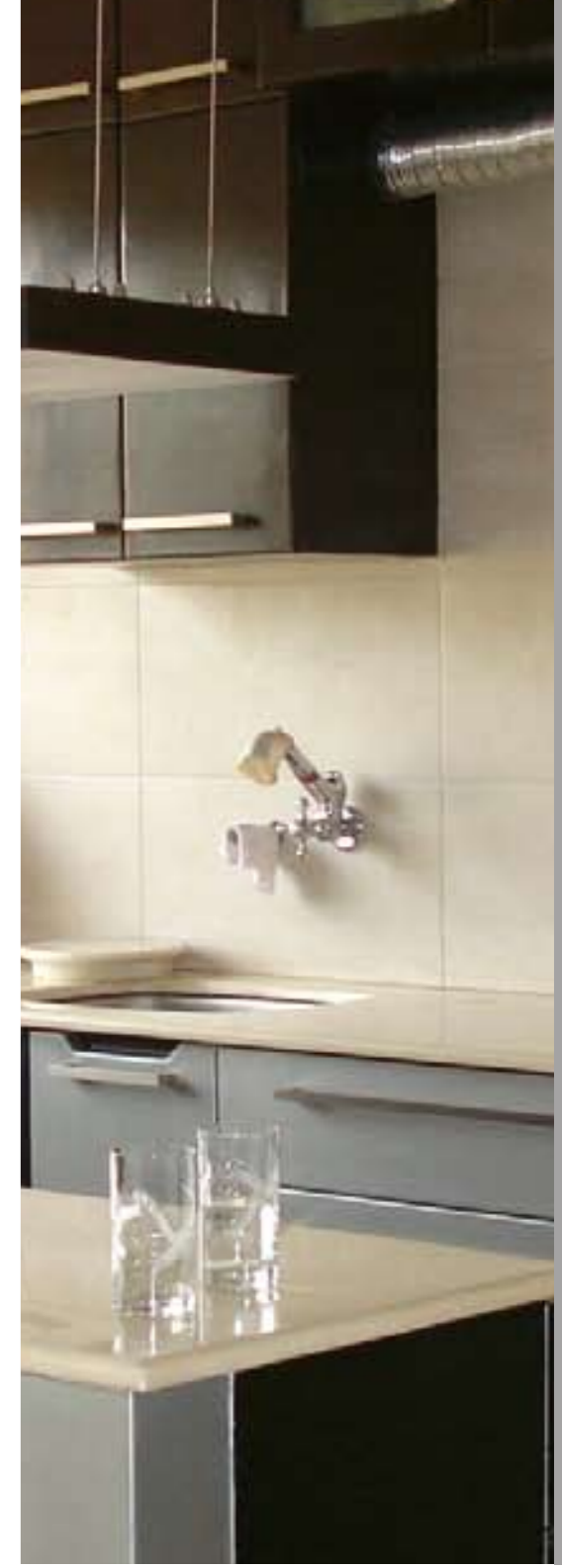
**ACCESSORIES:** Scratch proof stainless steel and acrylic sinks, Stainless steel faucets. Our woodwork package includes 5 stainless steel baskets.

**OPTIONS:** Additional baskets like tandem boxes, meta boxes, carousels, etc

**Trays:** Vertical divider tray, cutlery divider tray, Lazy Susan, roll trays.

**Pull-outs / sliders racks and stands for:** Bottles and containers, vegetables, waste basket, cutting board, knife block, spice racks, gas cylinder stands, towel bar.

**WARRANTY:** Free from manufacturing defects for 1 year from date of installation.





## Wardrobes, Shelves and Cabinets

Tandem will help you identify...the kind of wardrobes, and shelves that suit your needs, space and budget. Combining form and function, our storage options are of the **highest quality, durable, well-crafted and elegant.** All the options we offer come in a **variety of designs, finishes and colours (with top-of-the-line hinges, handles and locks).**

**Wardrobes,** with dressing table units of different types and sizes

**Shelves:** For books, audio-visual equipment and curios

**Cabinets** for bathrooms

**MATERIALS AND FINISH:** MDF, veneer, laminates and natural wood. Wood is chemically treated and protected

**DOOR STYLES:** Various options available.

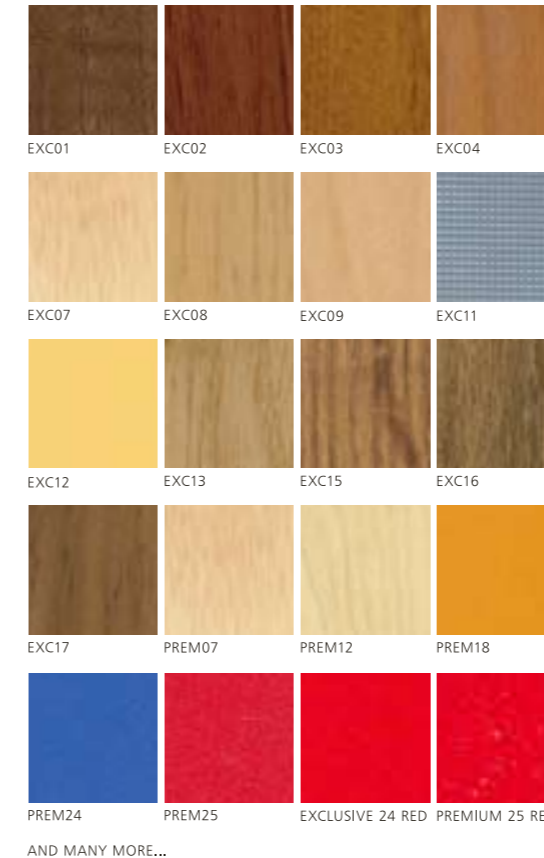
**HARDWARE:** Concealed, self-closing, EBCO/Hettich or equivalent adjustable hinges. Wood, metal or epoxy-coated handles and knobs. Telescopic channels.

**ACCESSORIES:** Additional drawers and racks, trouser holder, shoe rack, belt and tie holders.

**OPTIONS:** Lighting & electrical fixtures and soft furnishings.

### COLOURS AND TREATMENTS

We offer a range of colours and finishes for your kitchen units and wardrobes.





## Tandem Allied Services

- Facility Management Services
- Interiors
- Financial Services
- Realty Services

Established in 2000, Tandem Allied is a one-stop shop for all property-related services, with a comprehensive range of value-added services in facility management, realty services, financial services and interior solutions. Tandem currently manages more than 3.5 million sft of residential, commercial, software and office facilities in Bangalore. Tandem's client list includes a wide variety of corporate organisations and individuals (both resident and NRIs).



**Tandem Allied Services Pvt. Ltd**  
Penthouse, Brigade Towers, Brigade Road, Bangalore 560 025.

Tel : +91-80-4111 7106/7108/7109/7112  
Fax : +91-80-4111 7107 sanjukta@tandemallied.com  
tanpms@airtelmail.in www.TandemAllied.com